

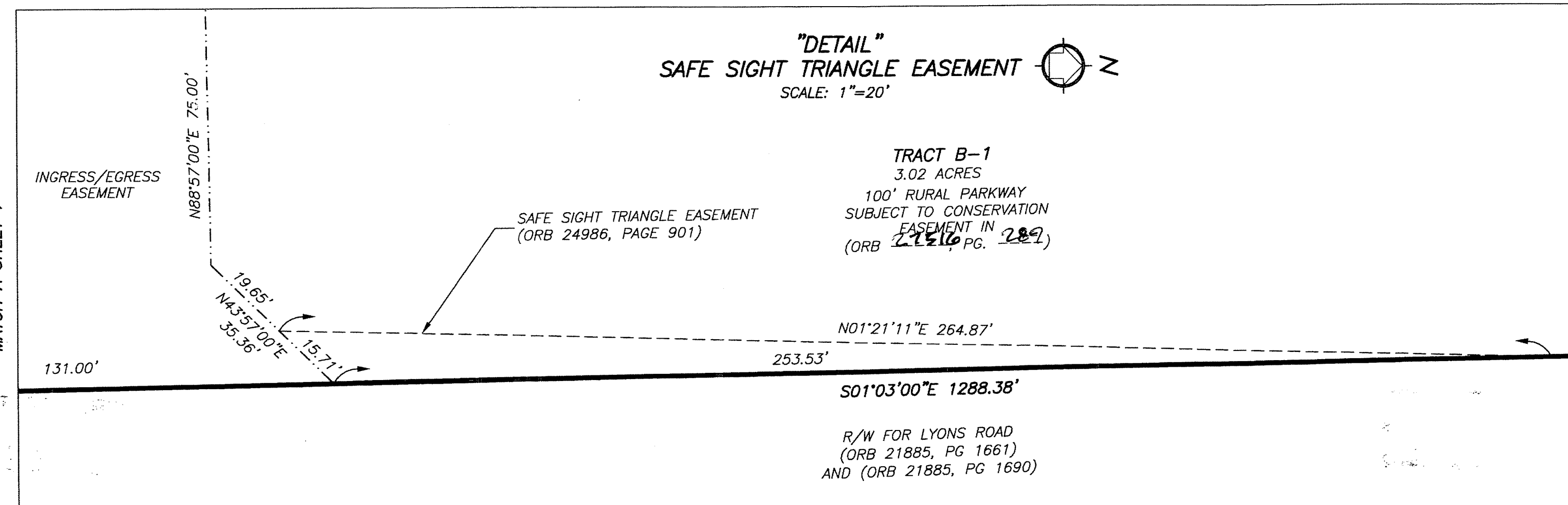
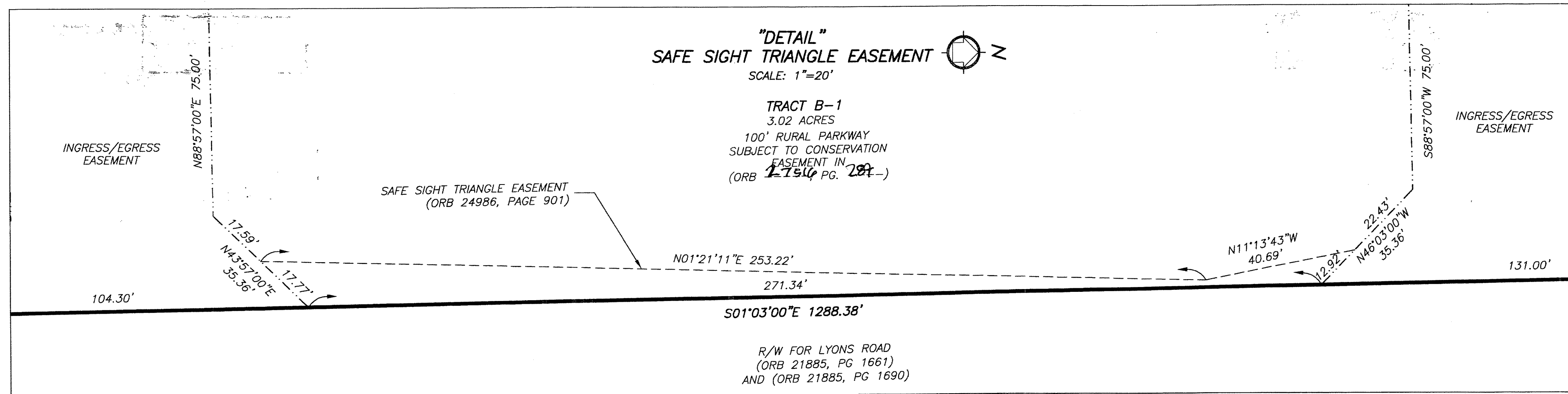
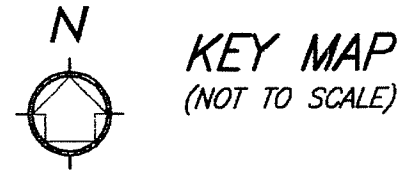
0937-006

DELRAY MARKETPLACE, REPLAT NO. 1

BEING A REPLAT OF A PORTION OF TRACT B, DELRAY MARKETPLACE PRESERVE 3, ACCORDING TO THE PLAT THEREOF, AS RECORDED IN PLAT BOOK 111, AT PAGE 95 THROUGH 97 INCLUSIVE, AND ALL OF DELRAY MARKETPLACE, ACCORDING TO THE PLAT THEREOF, AS RECORDED IN PLAT BOOK 115, AT PAGE 19 THROUGH 26 INCLUSIVE, OF THE PUBLIC RECORDS OF PALM BEACH COUNTY, FLORIDA. SAID LANDS LYING AND SITUATE IN SECTIONS 17 AND 18, TOWNSHIP 46 SOUTH, RANGE 42 EAST, PALM BEACH COUNTY, FLORIDA.

29

State of Florida }
 County of Palm Beach } SS
 THIS PLAT WAS FILED FOR
 RECORD AT _____ M.
 THIS _____ DAY OF _____
 A.D. 2014 AND DULY RECORDED
 IN PLAT BOOK _____ ON
 PAGES _____ THROUGH _____.
 SHARON R. BOCK
 CLERK AND COMPTROLLER
 BY: _____
 DEPUTY CLERK



LEGEND:

- CCR = CERTIFIED CORNER RECORD
- DE = DRAINAGE EASEMENT
- LAE = LIMITED ACCESS EASEMENT
- LB = LICENSED BUSINESS
- ORB = OFFICIAL RECORDS BOOK
- PB = PLAT BOOK
- PBCUE = PALM BEACH COUNTY UTILITY EASEMENT
- PBCWUE = PALM BEACH COUNTY WATER UTILITY EASEMENT
- PG. = PAGE
- PRM = PERMANENT REFERENCE MONUMENT
- R/W = RIGHT-OF-WAY
- ① = SHEET NUMBER
- = FOUND OR SET 4"x4" CONC. PRM & ALUMINUM CAP STAMPED "LB 7055 PRM" EXCEPT AS NOTED.
- UE = UTILITY EASEMENT